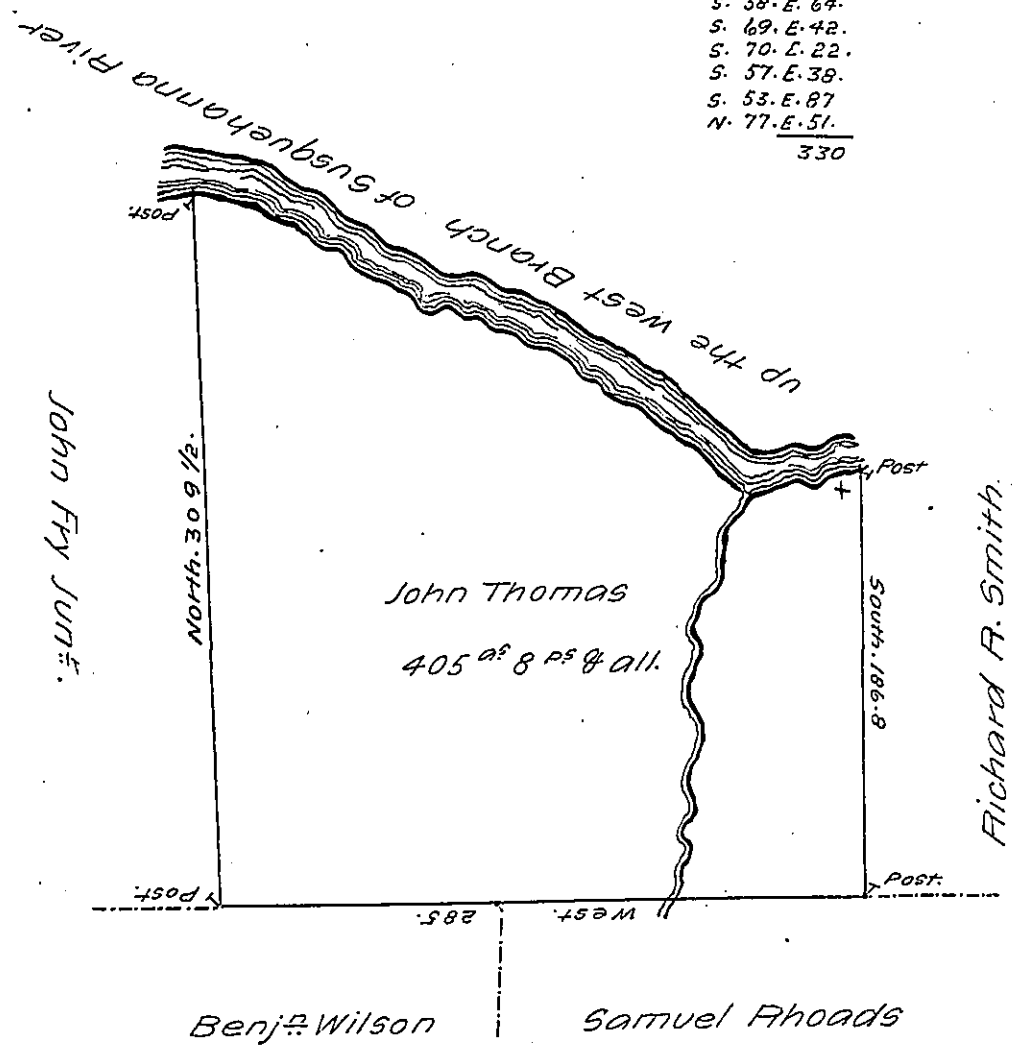


The Courses and Distances Down the River are as follows.

- S. 73. E. 26.
 - S. 58. E. 67.
 - S. 69. E. 42.
 - S. 70. E. 22.
 - S. 57. E. 38.
 - S. 53. E. 87.
 - N. 77. E. 51.
- 330

-17.



Situate on the South Side of the West Branch of the River Sesquehanna and including the Mouth of Alder Run in Allegheny Township Huntingdon County containing four hundred and five Acres eight Perches and the Usual Allowance for Roads Surveyed the 18th day of April 1797 for John Thomas in pursuance of a Warrant dated the 15th day of March 1797.

John Canan. D.S.

Daniel Brodhead Esq. S.G.

IN TESTIMONY that the above is a copy of the original remaining on file in the Department of Internal Affairs of Pennsylvania, made conformably to an Act of Assembly approved the 16th day of February, 1833, I have hereunto set my Hand and caused the Seal of said Department to be affixed at Harrisburg, this third day of April 1907.

Lucas D. Brown
Secretary of Internal Affairs.